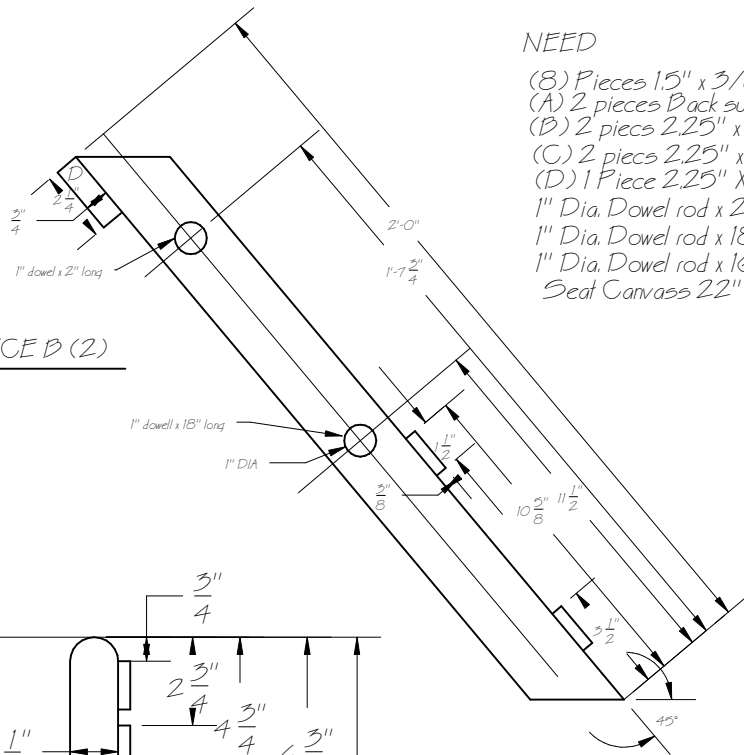


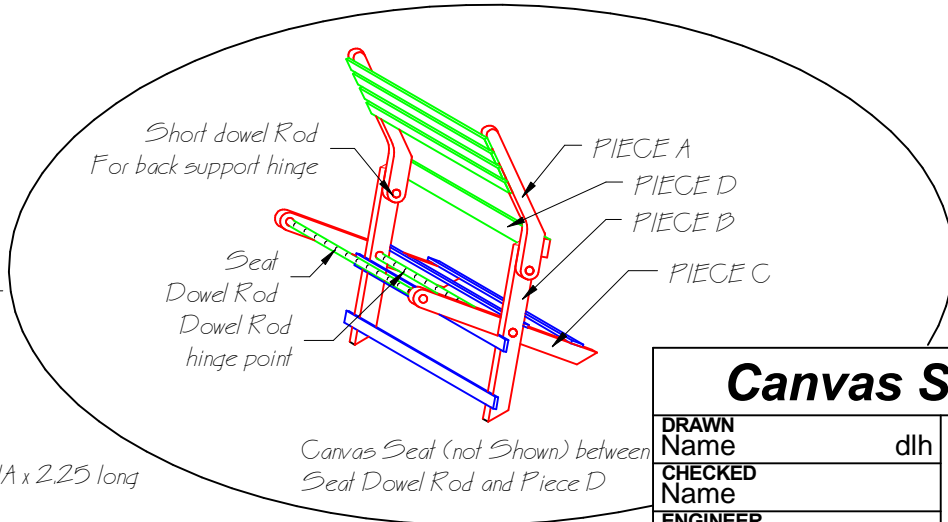
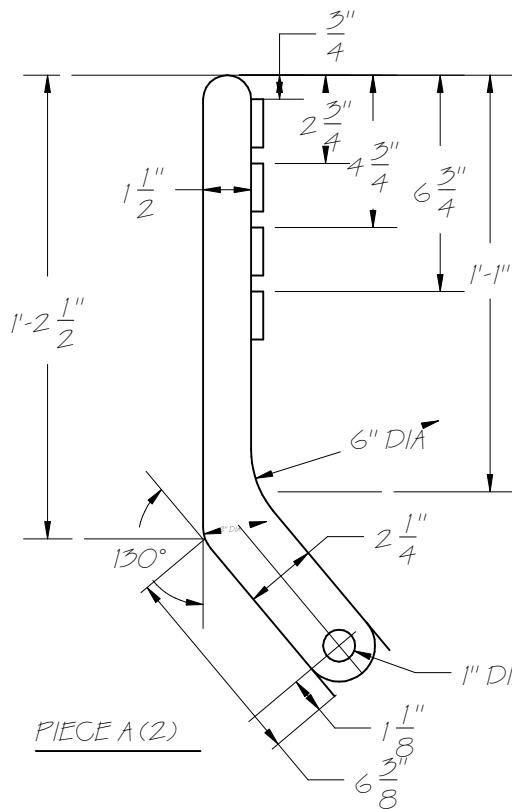
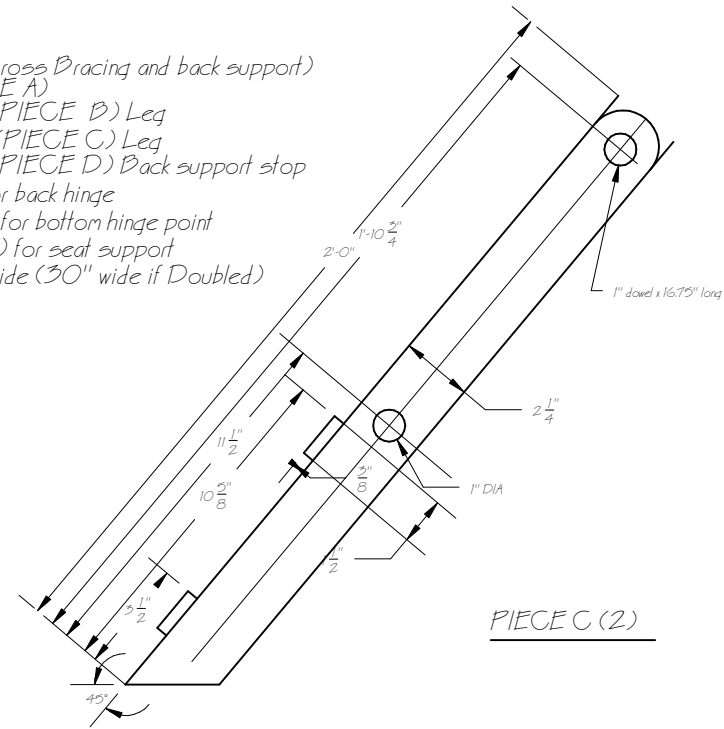
NEED

- (8) Pieces 1.5" x 3/8" x 20" (Cross Bracing and back support)
- (A) 2 pieces Back support (PIECE A)
- (B) 2 pieces 2.25" x .75" x 24" (PIECE B) Leg
- (C) 2 pieces 2.25" x .75" x 24" (PIECE C) Leg
- (D) 1 Piece 2.25" x .75" x 20" (PIECE D) Back support stop
- 1" Dia. Dowel rod x 2" long (2) for back hinge
- 1" Dia. Dowel rod x 18.5" long (1) for bottom hinge point
- 1" Dia. Dowel rod x 16.75" long (1) for seat support
- Seat Canvass 22" Long x 15" wide (30" wide if Doubled)

PIECE B (2)



PIECE C (2)



Canvas Seat (not Shown) between Seat Dowel Rod and Piece D

Canvas Seat (Folding)

DRAWN Name	dlh	
CHECKED Name	CHAIR	
ENGINEER Name	SIZE	DWG NUMBER
APPROVED Name	A	FCF1 - 2016
SCALE 2"=1'	REV -	SHEET 1 OF 1